



A Project by :

ShivSadhna
BUILDCON

For Enquiry :

+91 98797 74406, 85111 19588, 98795 67368

shivsadhnbuidcon@gmail.com



SKYWALK

MANGLAAM

3 BHK LIVING & SHOPS

SKYWALK
MANGLAAM

A Home in the
Clouds





Luxury You

Truly Deserve

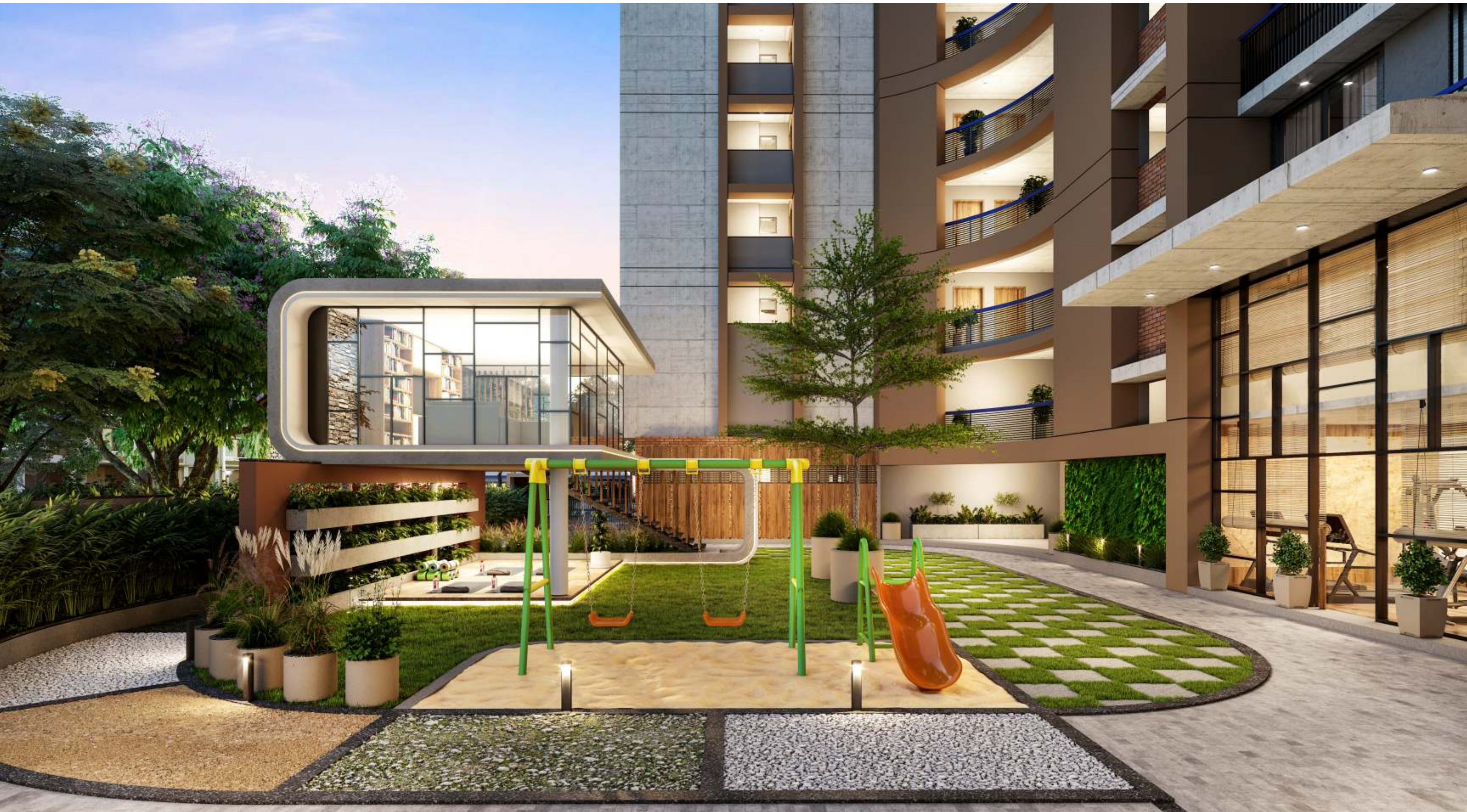
Introducing you to a life you've aspired for, and world-class designs you've always yearned for. You've lived your version of a lavish life; now experience the real deal... at 'Skywalk Manglaam'.

With an edge over the rest, and centrally located in the heart of Ahmedabad, Skywalk is Model Colony's luxury

landmark in the making. This premium project by SHIVSADHNA BUILDCON is adorned with every necessary convenience of the city life. Tastefully stylish and luxurious 3 BHK apartments, with distinctive specifications, convenient roadways, proximity of institutions and entertainment hubs, lush green corners, and an exhaustive list of amenities, Skywalk is your royalty realised.

Space So Rare.
Surroundings
So Serence. Moments So Unique.

At SKYWALK MANGALAAM your world is so different that you will relive every moments. Each unit is a marvel and every marvel is precisely planned and inter worked with chic interior and classy amenities. Landscaped with substantial spaces each of the abode here, is simply beyond belief. Come and rediscover life at SKYWALK MANGALAAM.







Create Homes

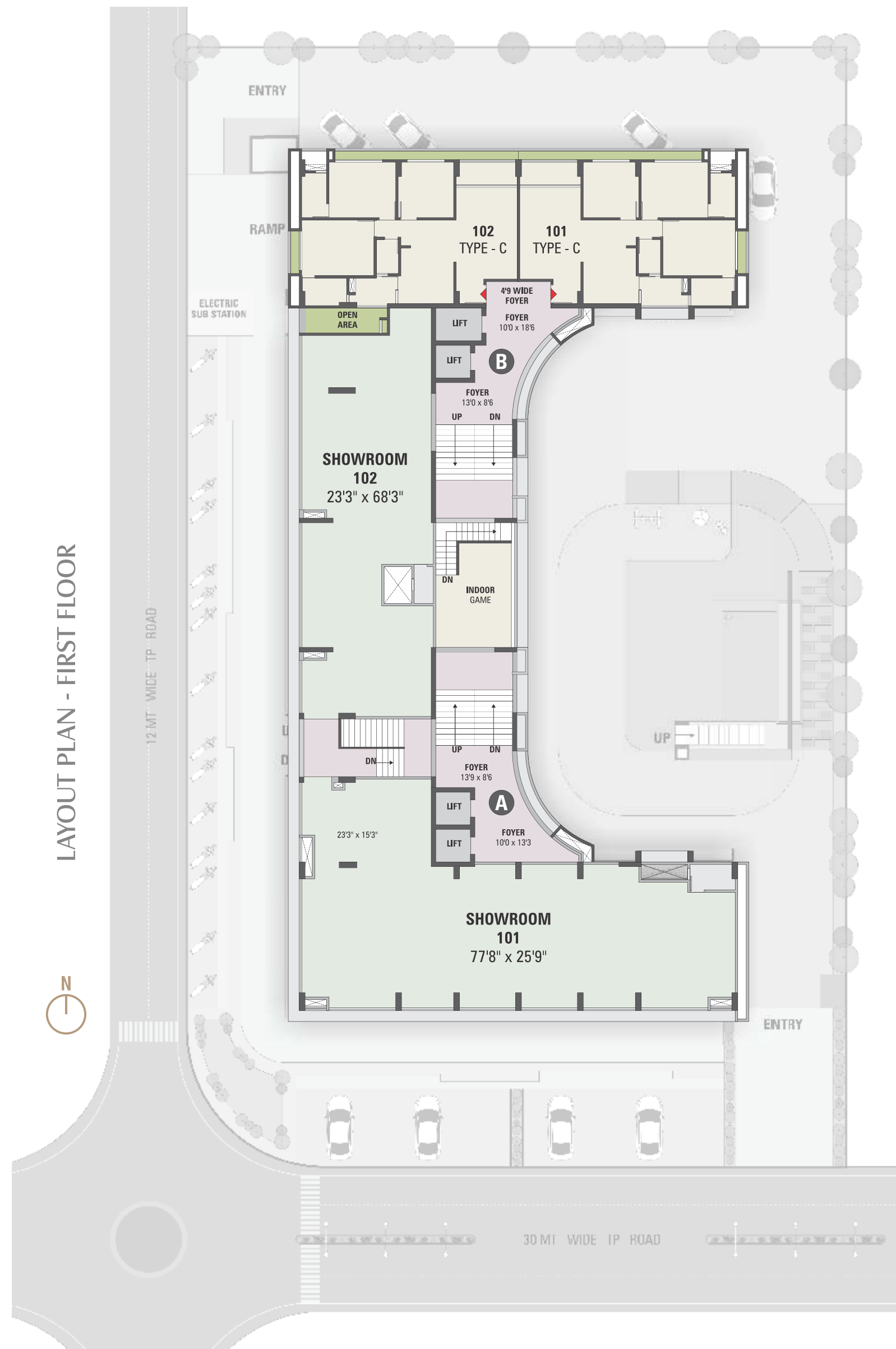
Where families can rediscover the joy of togetherness and spending precious time with each other

-  LANDSCAPED GARDEN
-  WALKING TRACK
-  CHILDREN'S PLAY AREA
-  SENIOR CITIZEN SIT OUTS
-  YOGA DESK

LAYOUT PLAN - GROUND FLOOR

-  2 LEVEL BASEMENT PARKING
-  24 HRS. SECURITY
-  CCTV CAMERA
-  24 HRS. WATER SUPPLY
-  FIRE SAFETY
-  AUTOMATIC LIFTS

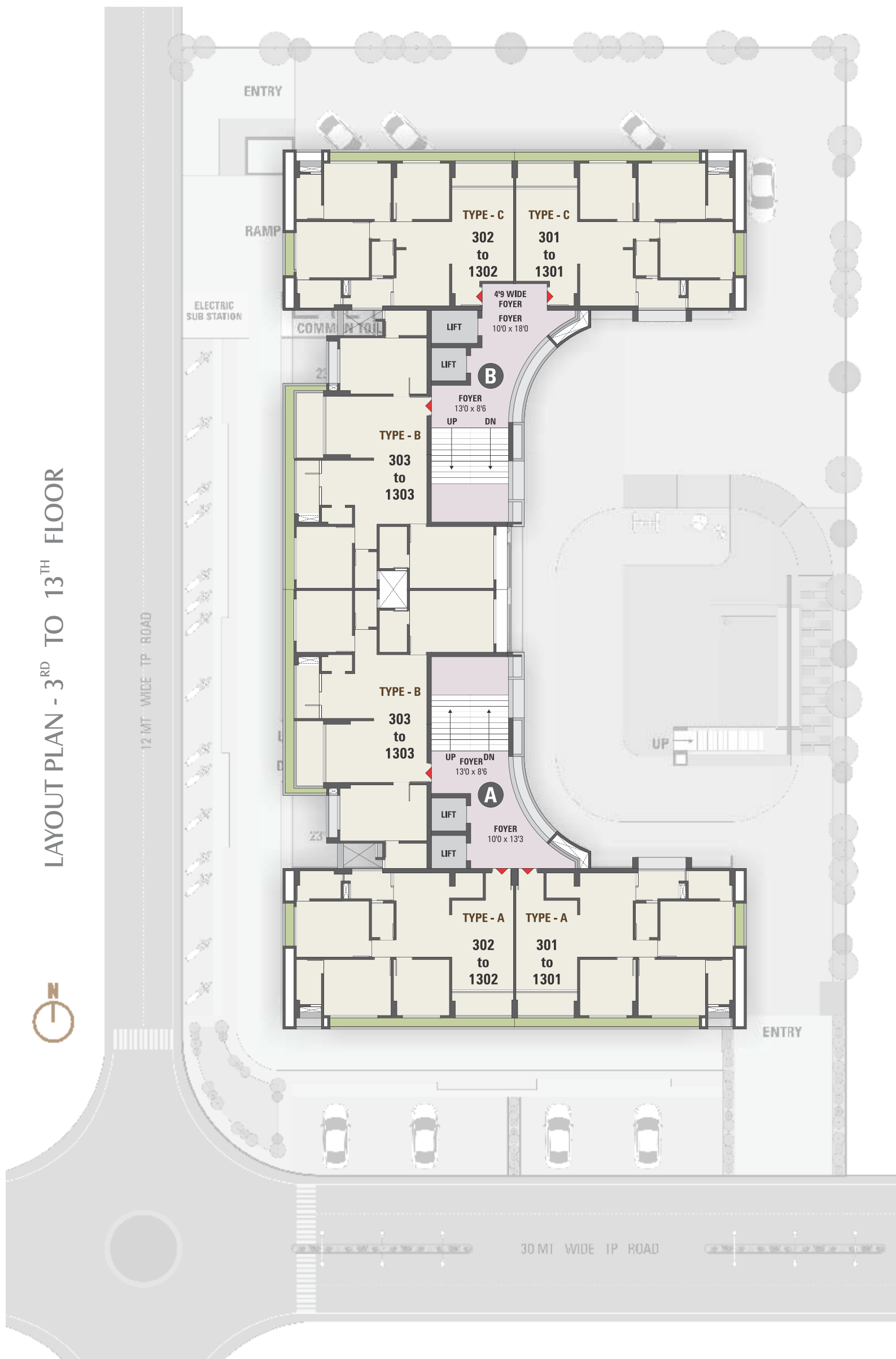
LAYOUT PLAN - FIRST FLOOR



LAYOUT PLAN - SECOND FLOOR



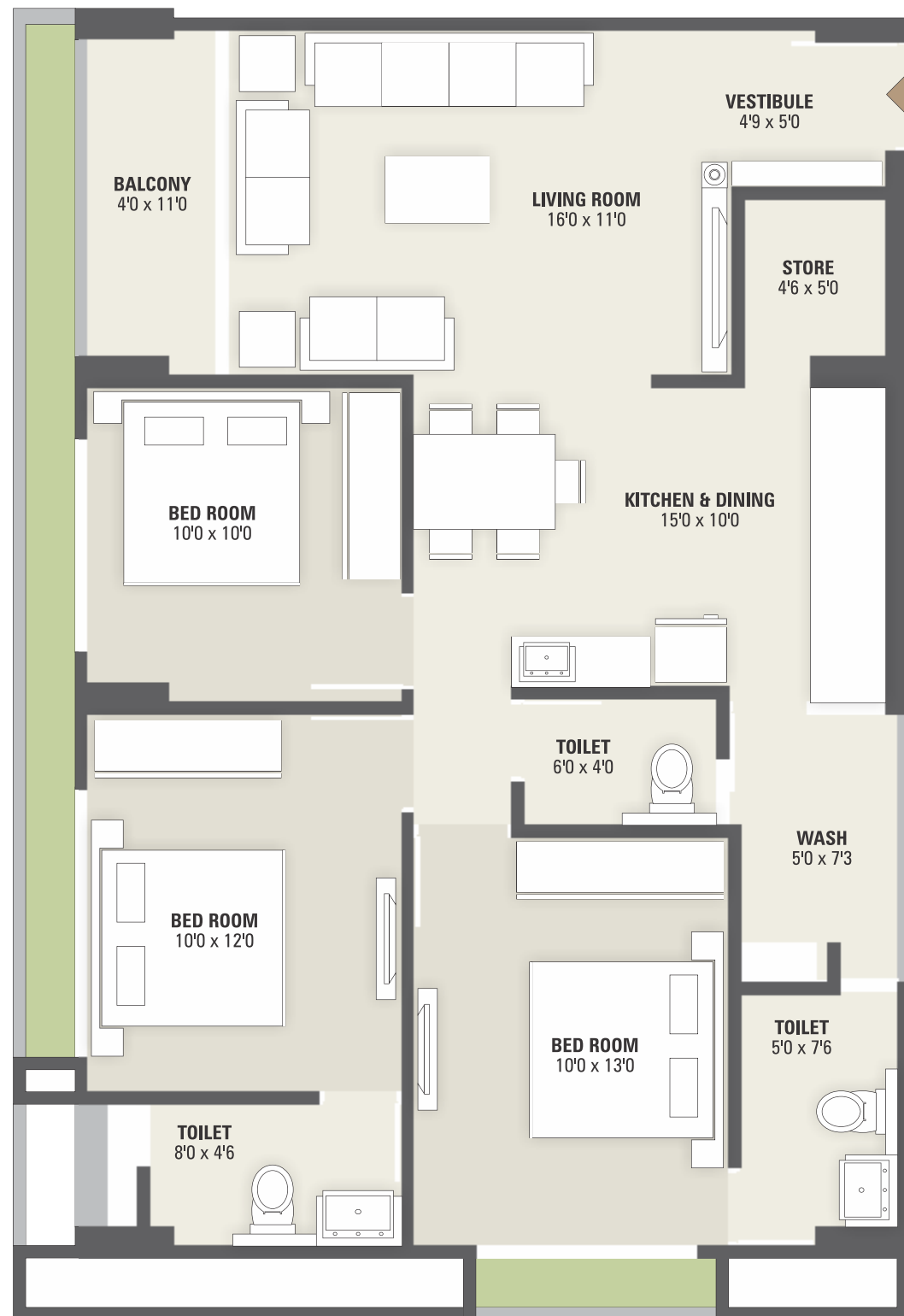
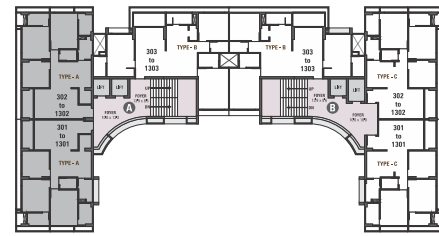
LAYOUT PLAN - 3RD TO 13TH FLOOR



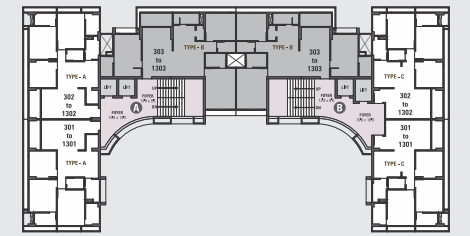
LAYOUT PLAN - 14th FLOOR



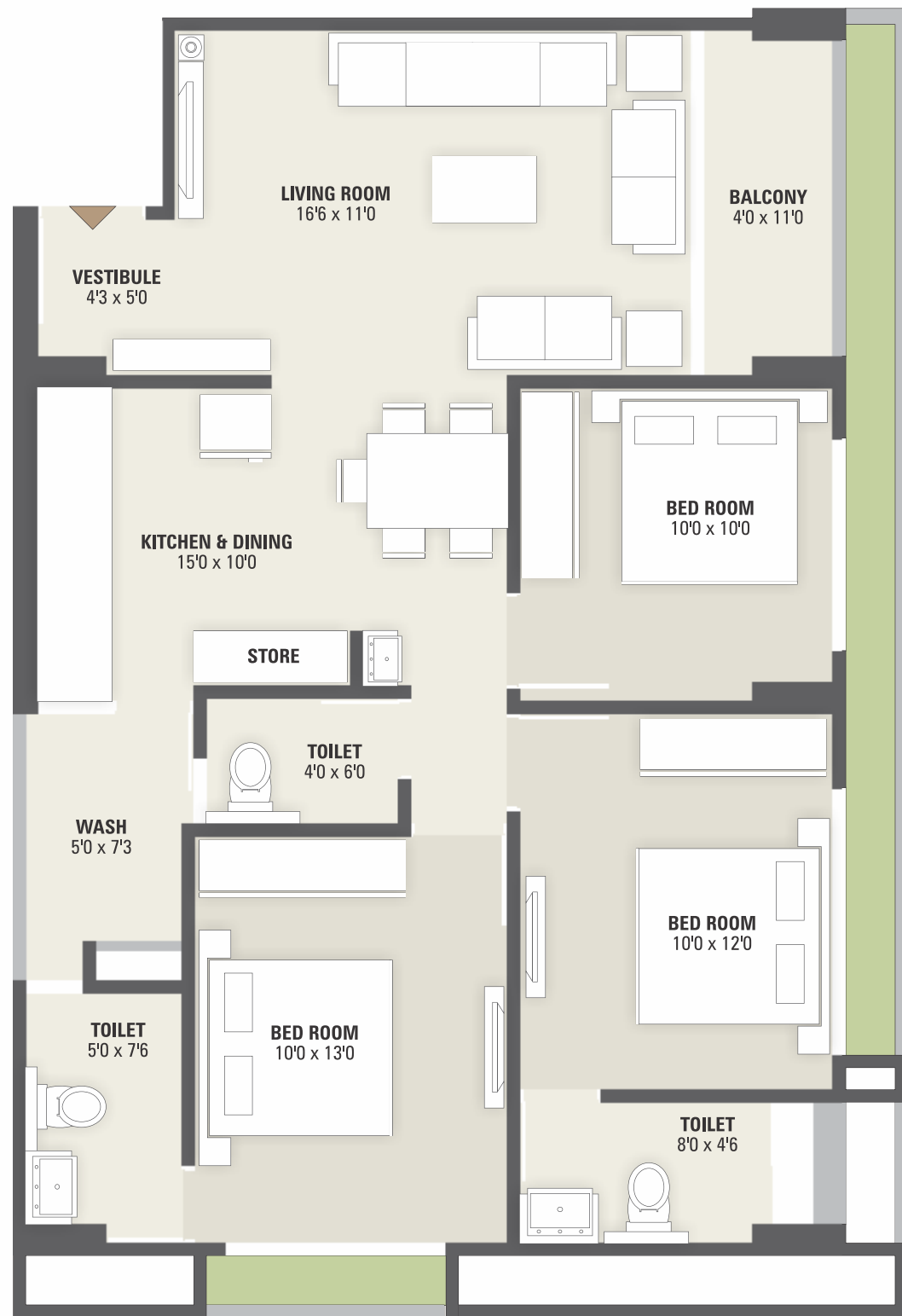
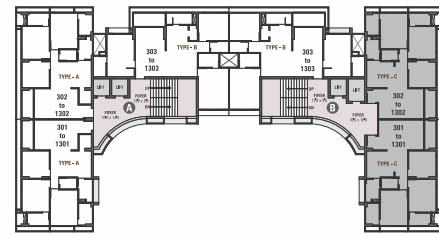
UNIT PLAN TYPE A
3 BHK



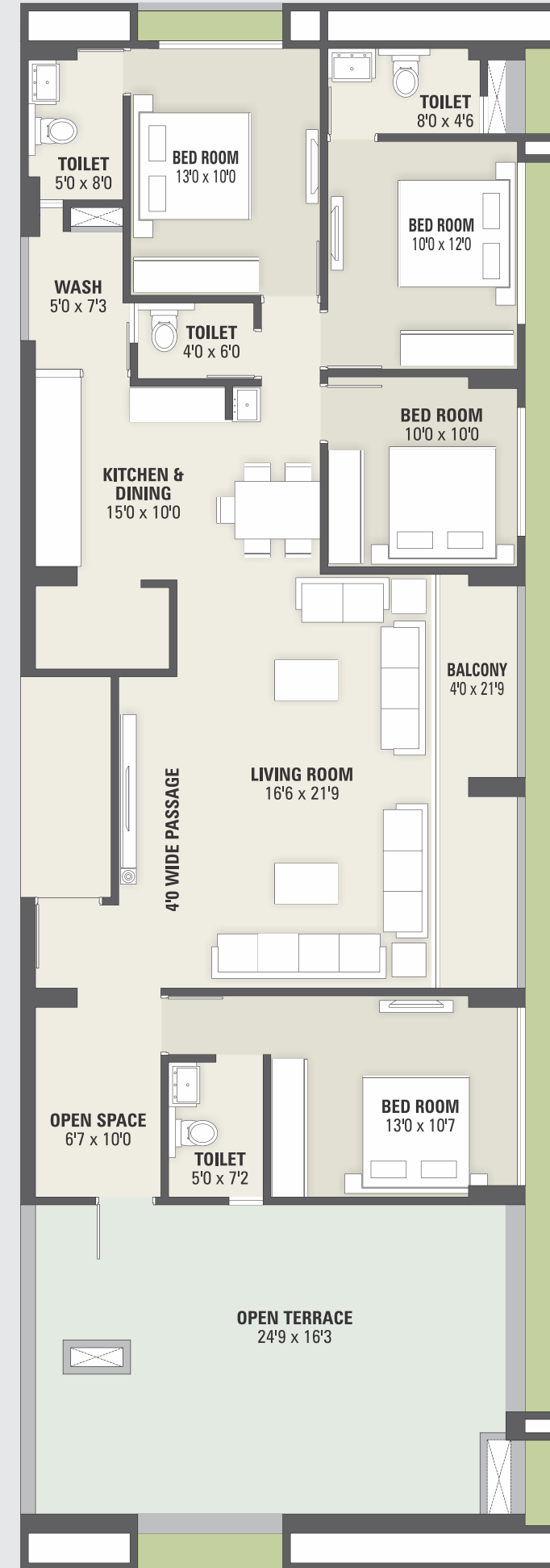
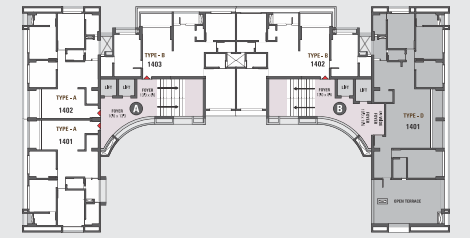
UNIT PLAN TYPE B
3 BHK



UNIT PLAN TYPE C
3 BHK



UNIT PLAN TYPE D
4 BHK



THE *Penthouse*

'You have arrived' is a feeling commonly associated while living in and owning a penthouse. Perched at the top and connected levels with an internal staircase, gives you access to a private terrace. A great view and a 'bungalow' connect within an apartment while having access to other comforts just a few floors lower; while you enjoy the top of the world feeling.





Spacious & Well

Ventilated

Apartments have been designed in a manner where you can combine togetherness of your family with personal independence

SKYWALK
MANGLAAM

Specification



FLOORING
Branded Vitrified tiles for entire flooring in all apartments.



WALL FINISH / ELEVATION
Internal mala plaster with white finish putty.
Attractive external elevation with double coat sand faced plaster with 100% acrylic paints.



DOORS & WINDOWS
Decorative main door & other flush doors with wooden frame.
All windows in aluminum section with granite frame.



KITCHEN
Mirror polished granite (black) platform with S.S. sink, designer glazed tiles up to lintel level.



ELECTRIFICATION
Branded ISI modular switches with concealed wiring and adequate number of points.
MCB distribution panel.



PLUMBING
ISI CPVC and UPVC pipes for water supply, PVC & SWR pipes for solid waste and drainage systems.
Percolation recharge wells as per the norms. Branded CP fittings.



TOILET
Branded Designer tiles on floor and walls up to lintel level.
Branded sanitary & bath fittings.



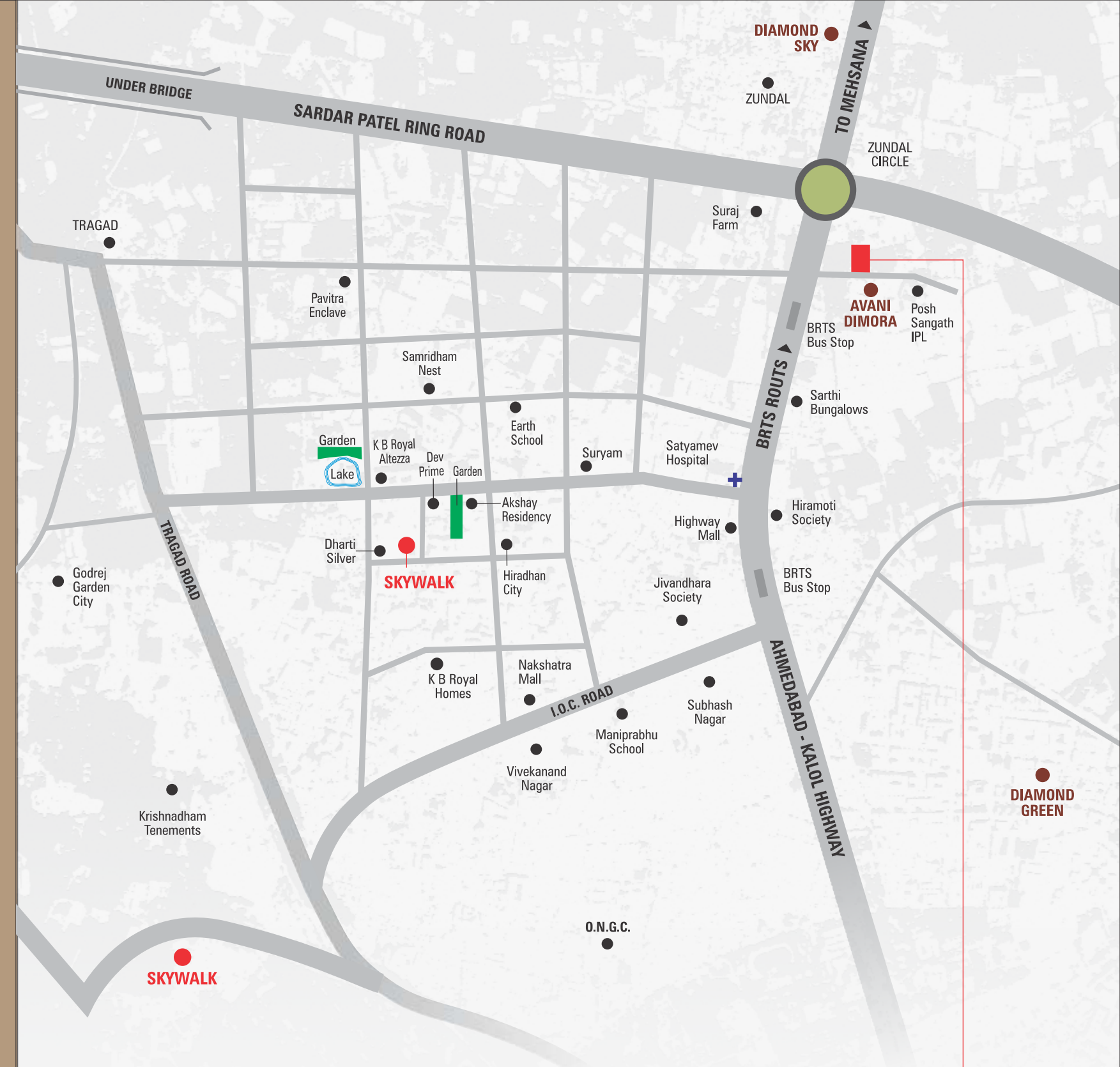
TERRACE
Brick-bat concrete with china mosaic for heat reflection and thermal insulation.



LIFT
2 premium quality lifts in each block.

NOTES:

- This brochure is not as legal part of document but only for easy understanding to customer
- Subject to Ahmedabad Jurisdiction
- Payments in favour of "SHIV SADHNA BUILDCON"



SKYWALK MANGLAAM

Site Address
Opp. Plam Glory, Posh Shangath IPL Road,
Zundal BRTS Road, Chandkheda, Ahmedabad.

Contact : +91 98797 74406, 85111 19588, 98795 67368
Email : shivsadhnbuilcon@gmail.com

Developers :

ShivSadhna
BUILDCON

Architect :

SR Design
The Destination of desires.
©: 99 9893 1707
info@srdesigncon.com
www.srdesigncon.com